



## DELIA V1

---

LED-1L14EMP700KNV62/PC22/NK1W 3K#

[WWW.OSMONT.CZ](http://WWW.OSMONT.CZ)

# DELIA V1

Product code: DEL65078

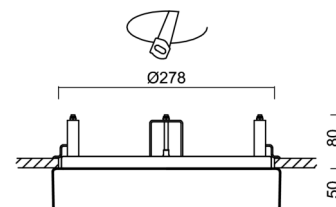
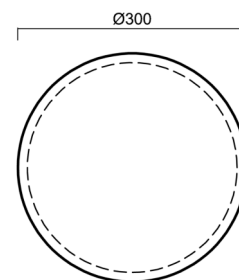
Type: LED-1L14EMP700KNV62/PC22/NK1W 3K#

Short description of the luminaire: White semi-recessed LED light with emergency unit combined and polycarbonate shade.



## Technical

|                              |                    |
|------------------------------|--------------------|
| Types of luminaires          | Emergency combined |
| Mounting type                | semi-recessed      |
| Base material                | steel              |
| Shade material               | opal polycarbonate |
| Base color                   | white Ra9003       |
| Shade color                  | white              |
| Holding the shade            | folding system     |
| Mounting location            | ceiling/wall       |
| Width                        | 300 mm             |
| Length                       | 300 mm             |
| Height                       | 60 mm              |
| Diameter                     | ø 300 mm           |
| mounting holes (diameter)    | none               |
| Installation wire (diameter) | 2xØ16mm            |
| Energy Class                 | D                  |
| Impact strength              | IK10               |
| Operating temperature        | from 0°C to +30°C  |

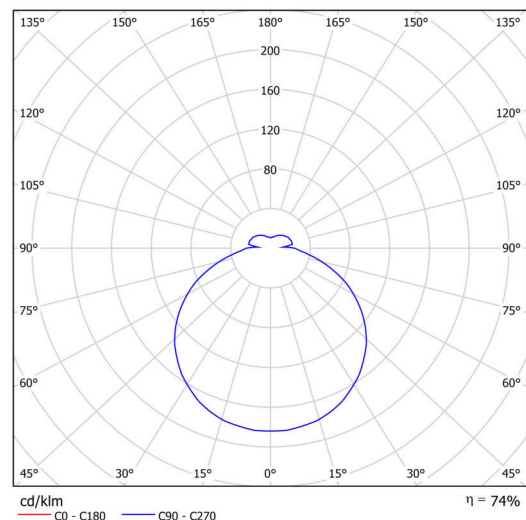


## Electric

|                                     |                     |
|-------------------------------------|---------------------|
| Power consumption                   | 18 W                |
| Ingress Protection                  | IP44                |
| Socket                              | LED modul           |
| Battery type                        | NiCd                |
| Emergency time                      | 3 hours             |
| terminal block                      | snap terminal block |
| Automatic circuit breaker type B10A | 26 pcs              |
| Automatic circuit breaker type B16A | 40 pcs              |
| Automatic circuit breaker type C10A | 30 pcs              |
| Automatic circuit breaker type C16A | 48 pcs              |

## Luminous

|                                             |              |
|---------------------------------------------|--------------|
| Lum. flux of luminaire                      | 1990 lm      |
| Lum. flux of light source                   | 2690 lm      |
| Lum. flux of light source in emergency mode | 150 lm       |
| Luminaire efficacy                          | 110 lm/W     |
| Temperature                                 | 3000 K       |
| Rated life time LED L80/B10                 | 100000 hours |
| CRI                                         | Ra80         |
| MacAdam                                     | 3            |
| Blue light hazard                           | Risk group 0 |



# TECHNICAL SHEET



Elum data for calculation programs are available at [www.osmont.cz](http://www.osmont.cz).

## Multipower

Possibility of output adjustment by the user (DIP switch on the current source).

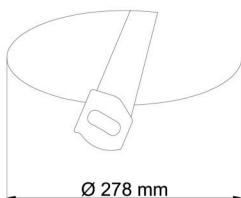
|        |     |     |     |     |  |
|--------|-----|-----|-----|-----|--|
| I [mA] | 700 | 600 | 500 | 400 |  |
| [%]    | 100 | 86  | 71  | 57  |  |

## Logistic

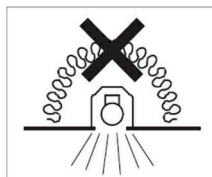
|                   |                      |
|-------------------|----------------------|
| EAN               | 8591728074623        |
| Weight NTTO       | 1.55 Kg              |
| Weight BTTO       | 1.75 Kg              |
| Number of cartons | 1 pcs                |
| Package volume    | 0.017 m <sup>3</sup> |
| Package 1 width   | 0.31 m               |
| Package 1 length  | 0.31 m               |
| Package 1 height  | 0.18 m               |
| Warranty*         | 60 months            |

\*The warranty for the batteries is valid for 12 months from the date of purchase.

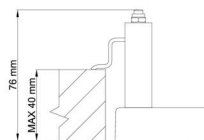
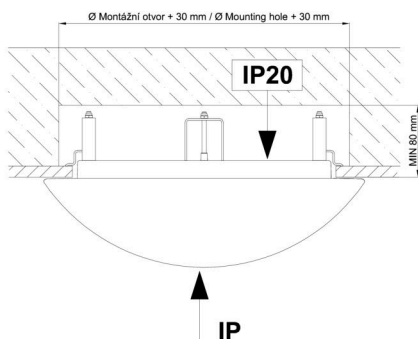
## Installation dimensions:



Svítlidlo nesmí být z horní strany zakryto izolací.  
Luminaire must not be covered with insulating matting.




Rozměry dutiny pro vestavné svítidlo [mm]:  
Dimensions of cavity for recessed luminaire [mm]:



Montáž do pevných materiálů - sádkarton, dřevo.  
Mounting into solid materials - plasterboard, wood.

## Additional assortment:

## Lampshade

| Product code | Name | Color | Description | Picture                                                                            | Drawing |
|--------------|------|-------|-------------|------------------------------------------------------------------------------------|---------|
| 20520        | PC22 | white |             |  |         |