



AURA 4

LED-1L15E500K74/072 NK3HST HF 4K#

WWW.OSMONT.CZ

AURA 4

Product code: AUR61513

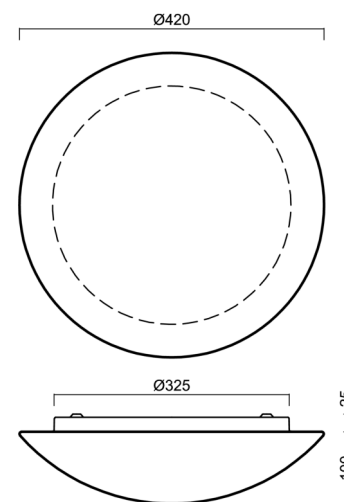
Type: LED-1L15E500K74/072 NK3HST HF 4K#

Short description of the luminaire: White colour | ceiling or wall LED light with emergency backup combined (with Self-test) with HF sensor |TRIPLEX OPAL hand blown glass shade|



Technical

| | |
|---------------------------|--------------------------------------|
| Types of luminaires | Emergency combined SELFTEST + sensor |
| Mounting type | surface mounted |
| Base material | steel |
| Shade material | three-layer glass TRIPLEX OPAL |
| Base color | white Ra9003 |
| Shade color | white |
| Holding the shade | folding system |
| Mounting location | ceiling/wall |
| Width | 420 mm |
| Length | 420 mm |
| Height | 125 mm |
| mounting holes (diameter) | 4xØ5mm |
| Cable entrance | 2xØ16mm |
| Energy Class | D |
| Impact strength | IK01 |
| Operating temperature | from -20°C to +30°C |



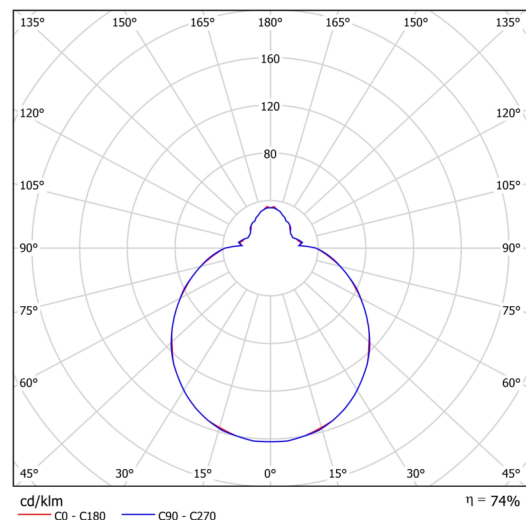
Electric

| | |
|--------------------|---------------------|
| Power consumption | 19 W |
| Ingress Protection | IP43 |
| Socket | LED modul |
| Battery type | LiFePO4 |
| Emergency time | 3 hours |
| SELFTEST | yes |
| terminal block | snap terminal block |

Luminous

| | |
|---|--------------|
| Lum. flux of luminaire | 2320 lm |
| Lum. flux of light source | 3130 lm |
| Lum. flux of light source in emergency mode | 200 lm |
| Temperature | 4000 K |
| Rated life time LED L80/B10 | 100000 hours |
| CRI | Ra80 |
| MacAdam | 3 |
| Blue light hazard | Risk group 0 |

Eulum data for calculation programs are available at www.osmont.cz.

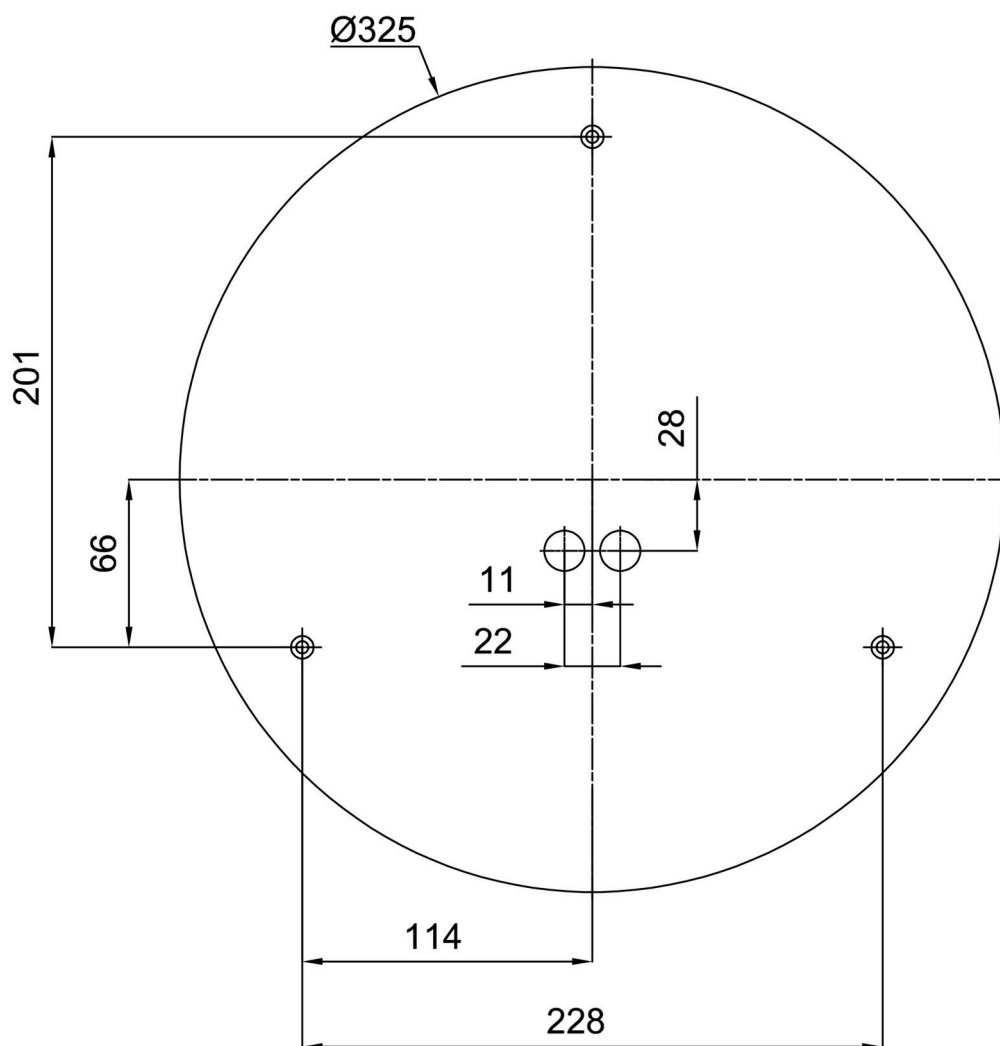


Logistic

| | |
|-------------------|----------------------|
| EAN | 8591728149284 |
| Weight NTTO | 2.8 Kg |
| Weight BTTO | 3.1 Kg |
| Number of cartons | 1 pcs |
| Package volume | 0.017 m ³ |
| Package 1 width | 0.355 m |
| Package 1 length | 0.375 m |
| Package 1 height | 0.13 m |
| Warranty* | 60 months |




*The warranty for the batteries is valid for 12 months from the date of purchase.

Installation dimensions:




Additional assortment:

Decorative collar

| Product code | Name | Color | Description | Picture | Drawing |
|--------------|----------|--------------------------|---------------|--|---------|
| 30131 | K74/DL15 | brushed stainless steel | příslušenství |  | |
| 30130 | K74/DL14 | polished stainless steel | příslušenství |  | |
| 30129 | K74/DL4 | white Ral9003 | příslušenství |  | |

Lampshade

| Product code | Name | Color | Description | Picture | Drawing |
|--------------|------|-------|---------------|--|---------|
| 20004 | 072 | white | příslušenství |  | |