



SYLVIA 2A

LED-1L28E350U11/132 4K#

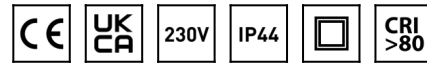
WWW.OSMONT.CZ

SYLVIA 2A

Product code: SYL59721

Type: LED-1L28E350U11/132 4K#

Short description of the luminaire: White surface-mounted LED light ON/OFF with TRIPLEX OPAL glass shade.



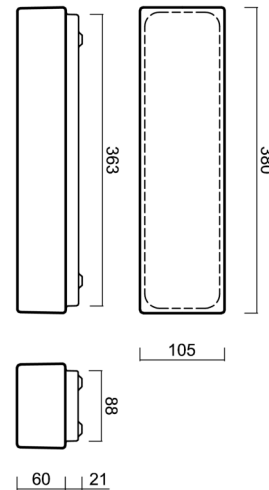
Technical

Types of luminaires	Classic on/off
Mounting type	surface mounted
Base material	steel
Shade material	three-layer glass TRIPLEX OPAL
Base color	white Ral9003
Shade color	white
Holding the shade	folding system
Mounting location	ceiling/wall
Width	380 mm
Length	105 mm
Height	75 mm
mounting holes (diameter)	2xØ5mm
Installation wire (diameter)	2xØ16mm
Energy Class	D
Impact strength	IK01



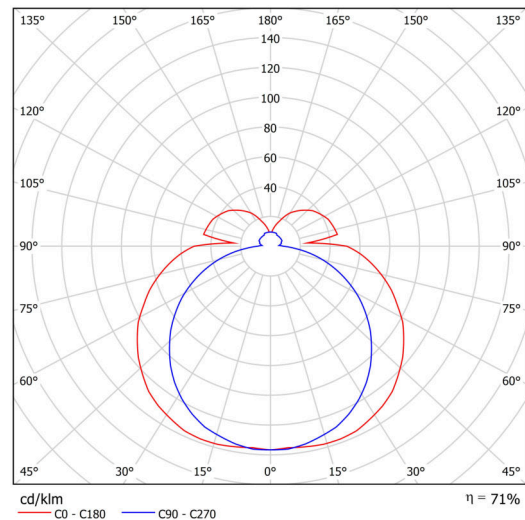
Electric

Power consumption	10 W
Coverage class	2
Ingress Protection	IP44
Socket	LED modul
terminal block	snap terminal block
Automatic circuit breaker type B10A	50 pcs
Automatic circuit breaker type B16A	78 pcs
Automatic circuit breaker type C10A	84 pcs
Automatic circuit breaker type C16A	130 pcs



Luminous

Lum. flux of luminaire	1140 lm
Lum. flux of light source	1610 lm
Luminaire efficacy	114 lm/W
Temperature	4000 K
Rated life time LED L80/B10	100000 hours
CRI	Ra80
MacAdam	3
Blue light hazard	Risk group 0



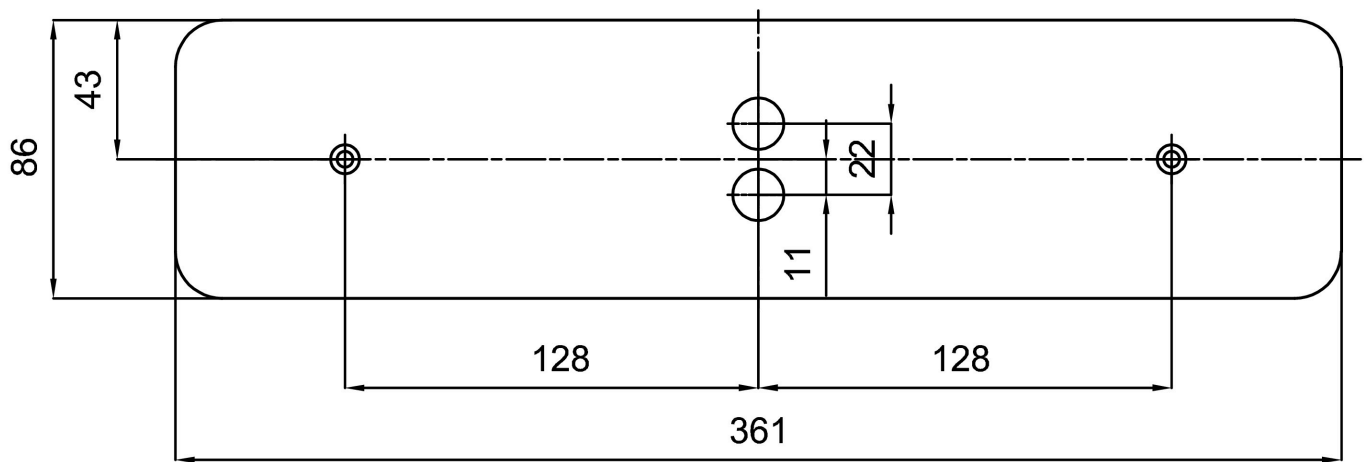
Eulum data for calculation programs are available at www.osmont.cz.

Logistic

EAN	8591728137649
Weight NTTO	1.9 Kg
Weight BTTO	2 Kg
Number of cartons	1 pcs
Package volume	0.004 m ³
Package 1 width	0.4 m
Package 1 length	0.12 m
Package 1 height	0.09 m
Warranty*	60 months


*The warranty for the batteries is valid for 12 months from the date of purchase.

Installation dimensions:



Additional assortment:

Lampshade

Product code	Name	Color	Description	Picture	Drawing
20115	132	white		 A 3D perspective rendering of a small, white, rectangular lampshade component. It has a slightly tapered top and bottom edge, and a smooth, matte finish.	