



LIBRA 2

LED-1L33E500NU3/233 HF CORR 3K#

WWW.OSMONT.CZ

LIBRA 2

Product code: LIB59121

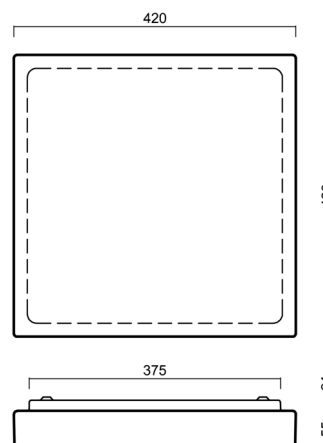
Type: LED-1L33E500NU3/233 HF CORR 3K#

Short description of the luminaire: White colour | ceiling or wall LED light with CORRIDOR function (DALI+HF sensor) | TRIPLEX OPAL hand blown glass shade |



Technical

Types of luminaires	Corridor
Mounting type	surface mounted
Base material	steel
Shade material	three-layer glass TRIPLEX OPAL
Base color	white Ral9003
Shade color	white
Holding the shade	folding system
Mounting location	ceiling/wall
Width	420 mm
Length	420 mm
Height	70 mm
mounting holes (diameter)	4xØ5mm
Cable entrance	2xØ16mm
Energy Class	D
Impact strength	IK01
Operating temperature	from -20°C to +30°C

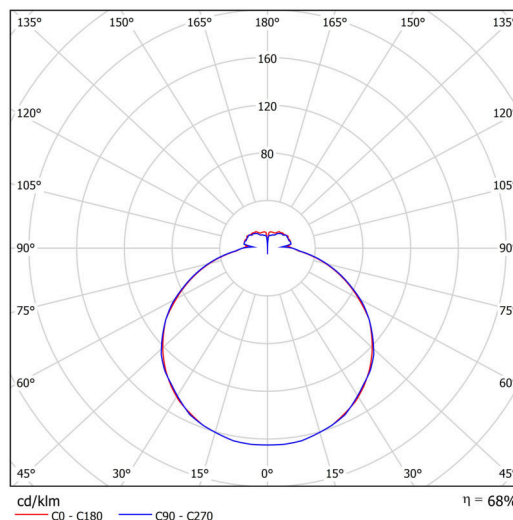


Electric

Power consumption	24 W
Ingress Protection	IP44
Socket	LED modul
Sensor	HF
terminal block	snap terminal block
Automatic circuit breaker type B10A	58 pcs
Automatic circuit breaker type B16A	23 pcs
Automatic circuit breaker type C16A	38 pcs

Luminous

Lum. flux of luminaire	2550 lm
Lum. flux of light source	3750 lm
Luminaire efficacy	106 lm/W
Temperature	3000 K
Rated life time LED L80/B10	100000 hours
CRI	Ra80
MacAdam	3
Blue light hazard	Risk group 0



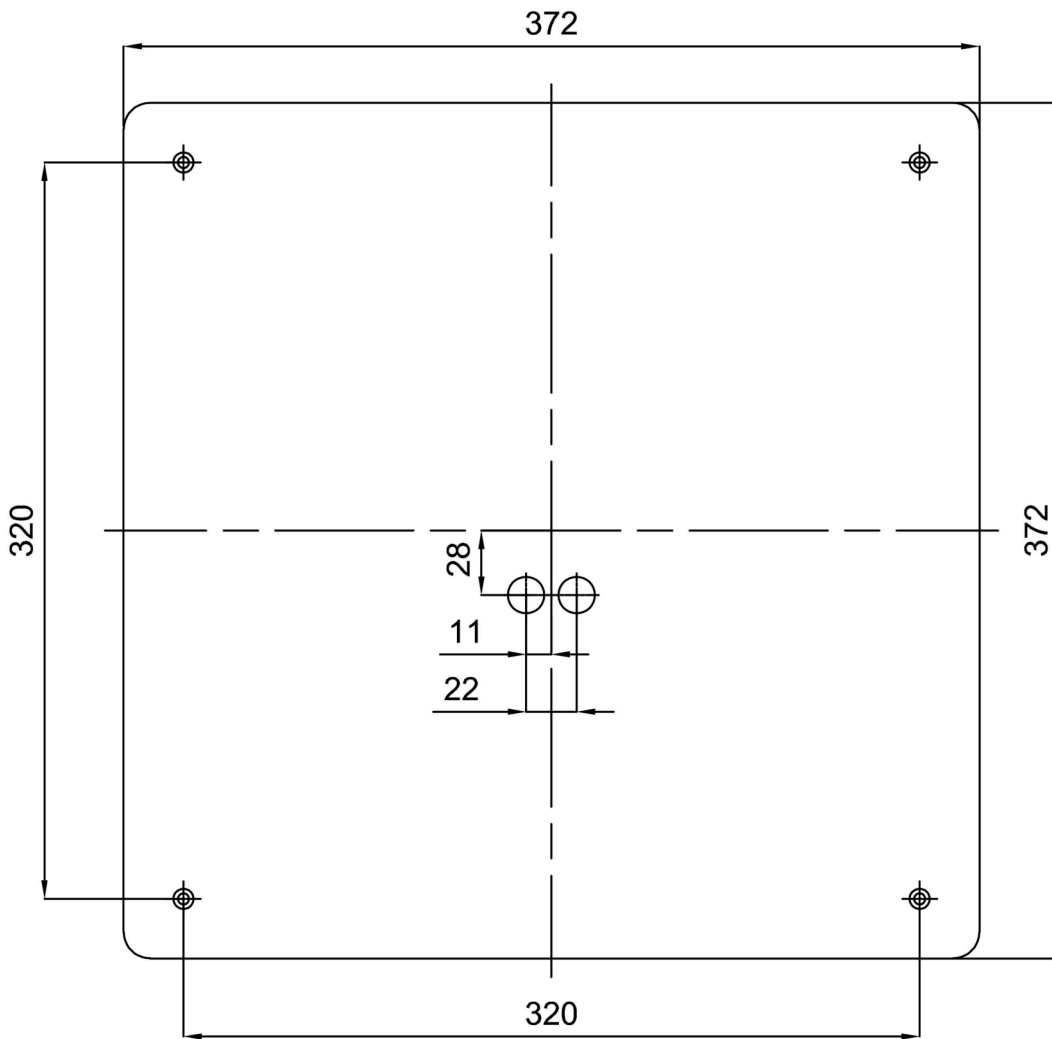
Eulum data for calculation programs are available at www.osmont.cz.

Logistic

EAN	8591728138967
Weight NTTO	5.1 Kg
Weight BTTO	5.4 Kg
Number of cartons	1 pcs
Package volume	0.018 m ³
Package 1 width	0.46 m
Package 1 length	0.44 m
Package 1 height	0.09 m
Warranty*	60 months

*The warranty for the batteries is valid for 12 months from the date of purchase.

Installation dimensions:



Additional assortment:

Lampshade

Product code	Name	Color	Description	Picture	Drawing
20113	233	white	příslušenství	