

## KRUGER P1 F0

LED-1L14E500ZKN62/FOC1/z5 C 3K#

[WWW.OSMONT.CZ](http://WWW.OSMONT.CZ)

# KRUGER P1 F0

Product code: KRU60162

Type: LED-1L14E500ZKN62/F0C1/z5 C 3K#

Short description of the luminaire: Black color | pendant LED light | ON/OFF | opal plastic shade | decorative collar



## Technical

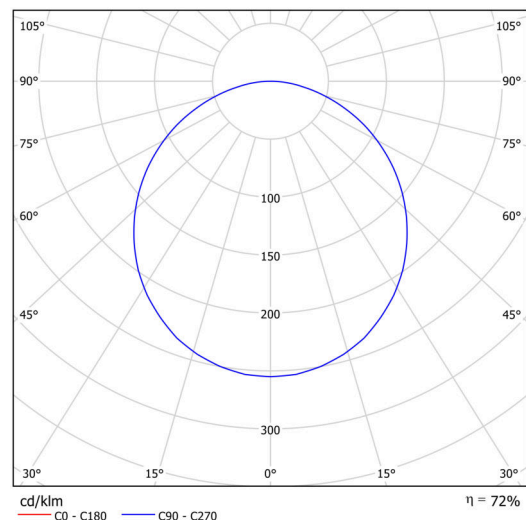
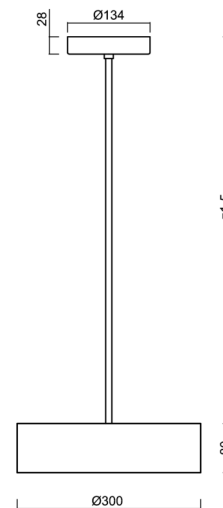
|                              |                                     |
|------------------------------|-------------------------------------|
| Types of luminaires          | Classic on/off                      |
| Mounting type                | Suspended - rod                     |
| Base material                | steel                               |
| Shade material               | Plastic opal (F0) with metal collar |
| Base color                   | black Ral9005                       |
| Shade color                  | white - black                       |
| Holding the shade            | folding system                      |
| Mounting location            | ceiling                             |
| Width                        | 300 mm                              |
| Length                       | 300 mm                              |
| Height                       | 80 mm                               |
| Diameter                     | ø 300 mm                            |
| Hinge length                 | 1000 mm                             |
| mounting holes (diameter)    | 3xø5mm                              |
| Installation wire (diameter) | 2xø16mm                             |
| Energy Class                 | D                                   |
| Operating temperature        | from -20°C to +30°C                 |

## Electric

|                                     |                     |
|-------------------------------------|---------------------|
| Power consumption                   | 13 W                |
| Ingress Protection                  | IP40                |
| Socket                              | LED modul           |
| terminal block                      | snap terminal block |
| Automatic circuit breaker type B10A | 37 pcs              |
| Automatic circuit breaker type B16A | 59 pcs              |
| Automatic circuit breaker type C10A | 37 pcs              |
| Automatic circuit breaker type C16A | 59 pcs              |

## Luminous

|                             |              |
|-----------------------------|--------------|
| Lum. flux of luminaire      | 1280 lm      |
| Lum. flux of light source   | 2000 lm      |
| Luminaire efficacy          | 98 lm/W      |
| Temperature                 | 3000 K       |
| Rated life time LED L80/B10 | 100000 hours |
| CRI                         | Ra80         |
| MacAdam                     | 3            |
| Blue light hazard           | Risk group 0 |



Eulum data for calculation programs are available at [www.osmont.cz](http://www.osmont.cz).

# TECHNICAL SHEET

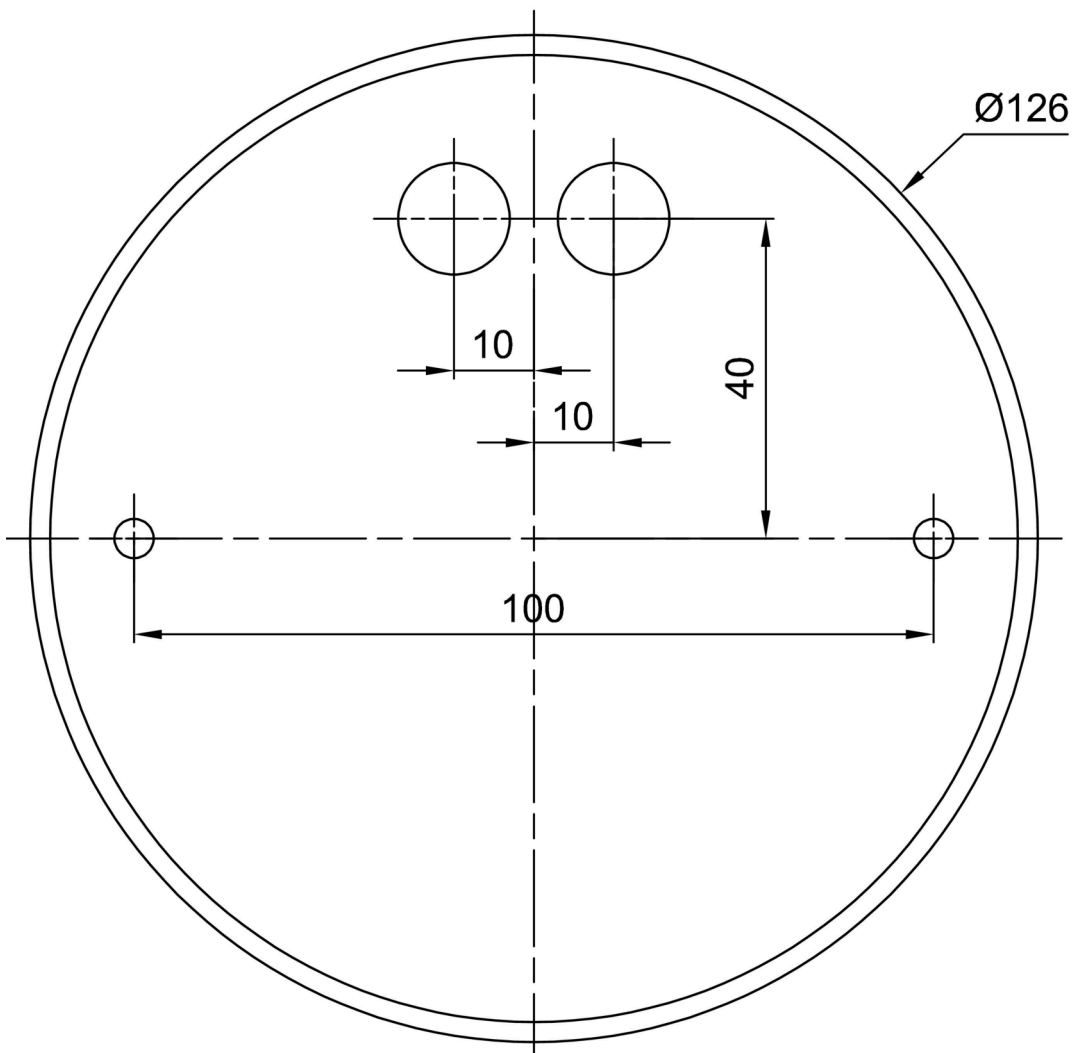


## Logistic

|             |               |
|-------------|---------------|
| EAN         | 8591728082314 |
| Weight NTT0 | 2.8 Kg        |
| Weight BTTO | 3.6 Kg        |
| Warranty*   | 60 months     |


\*The warranty for the batteries is valid for 12 months from the date of purchase.

## Installation dimensions:



## Additional assortment:

## Lampshade

| Product code | Name | Color         | Description | Picture   | Drawing |
|--------------|------|---------------|-------------|---|---------|
| 20634        | F01C | white - black |             |  A small, black, cylindrical lampshade with a white interior surface, shown from a perspective view. |         |