



## CORVUS 2

---

LED-1L20EXMP700KN94/PC44 3K#

[WWW.OSMONT.CZ](http://WWW.OSMONT.CZ)

# CORVUS 2

Product code: COR71052

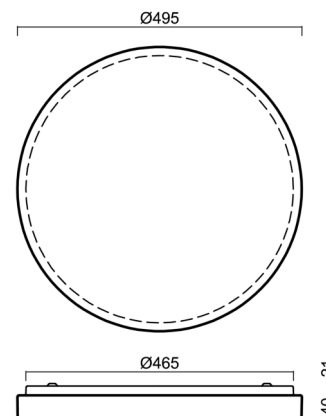
Type: LED-1L20EXMP700KN94/PC44 3K#

Short description of the luminaire: White surface-mounted LED light ON/OFF and polycarbonate shade



## Technical

|                              |                     |
|------------------------------|---------------------|
| Types of luminaires          | Classic on/off      |
| Mounting type                | surface mounted     |
| Base material                | steel               |
| Shade material               | opal polycarbonate  |
| Base color                   | white Ral9003       |
| Shade color                  | white               |
| Holding the shade            | folding system      |
| Mounting location            | ceiling/wall        |
| Width                        | 495 mm              |
| Length                       | 495 mm              |
| Height                       | 61 mm               |
| Diameter                     | ø 495 mm            |
| mounting holes (diameter)    | 3xø5mm              |
| Installation wire (diameter) | 2xø16mm             |
| Energy Class                 | D                   |
| Impact strength              | IK10                |
| Operating temperature        | from -20°C to +30°C |

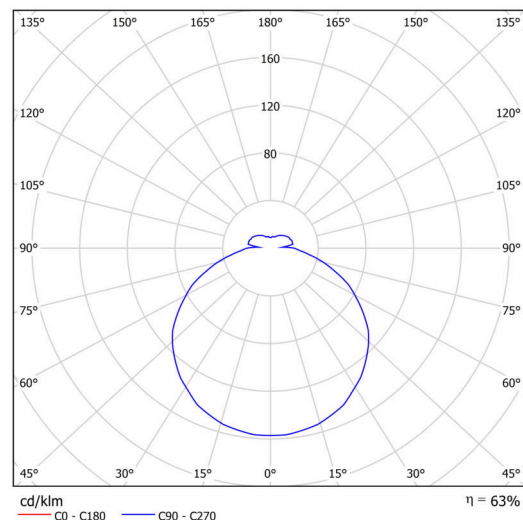


## Electric

|                                     |                     |
|-------------------------------------|---------------------|
| Power consumption                   | 32 W                |
| Ingress Protection                  | IP54                |
| Socket                              | LED modul           |
| terminal block                      | snap terminal block |
| Automatic circuit breaker type B10A | 37 pcs              |
| Automatic circuit breaker type B16A | 59 pcs              |
| Automatic circuit breaker type C10A | 37 pcs              |
| Automatic circuit breaker type C16A | 59 pcs              |

## Luminous

|                             |              |
|-----------------------------|--------------|
| Lum. flux of luminaire      | 3760 lm      |
| Lum. flux of light source   | 5370 lm      |
| Luminaire efficacy          | 117 lm/W     |
| Temperature                 | 3000 K       |
| Rated life time LED L80/B10 | 100000 hours |
| CRI                         | Ra80         |
| MacAdam                     | 3            |
| Blue light hazard           | Risk group 0 |



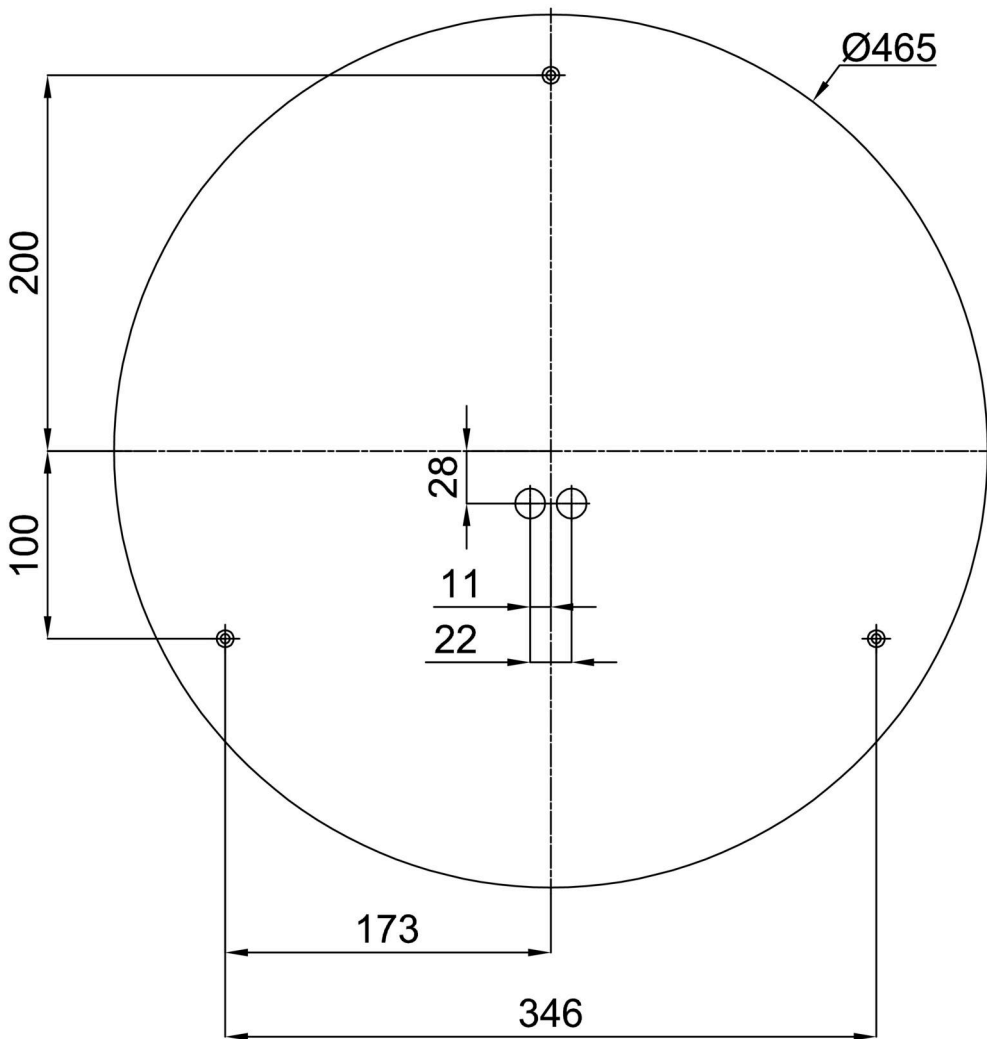
Eulum data for calculation programs are available at [www.osmont.cz](http://www.osmont.cz).

Logistic

|                   |                      |
|-------------------|----------------------|
| EAN               | 8591728072278        |
| Weight NTTO       | 1.9 Kg               |
| Weight BTTO       | 2.1 Kg               |
| Number of cartons | 1 pcs                |
| Package volume    | 0.039 m <sup>3</sup> |
| Package 1 width   | 0.528 m              |
| Package 1 length  | 0.528 m              |
| Package 1 height  | 0.14 m               |
| Warranty*         | 60 months            |

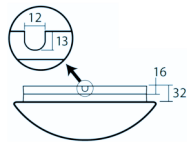
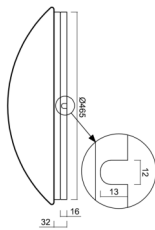
\*The warranty for the batteries is valid for 12 months from the date of purchase.

Installation dimensions:


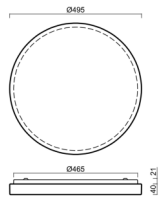


Additional assortment:

Base for surface mounting

| Product code | Name           | Color            | Description | Picture  | Drawing   |
|--------------|----------------|------------------|-------------|--|---|
| 33503        | KN9,K9,B17 /BP | white<br>Ra19003 |             |  |  |

Lampshade

| Product code | Name | Color | Description | Picture  | Drawing   |
|--------------|------|-------|-------------|--|---|
| 20614        | PC44 | white |             |  |  |